

3430-0834 Installation Instructions

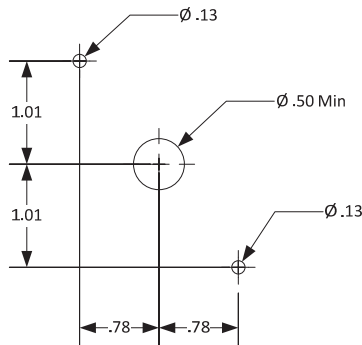
Form 949-Rev150506

The Internal Single Tank Flush kit is to be installed on the apparatus and uses water pump pressure and flow to flush the proportioner with the ease of a flip of a switch.

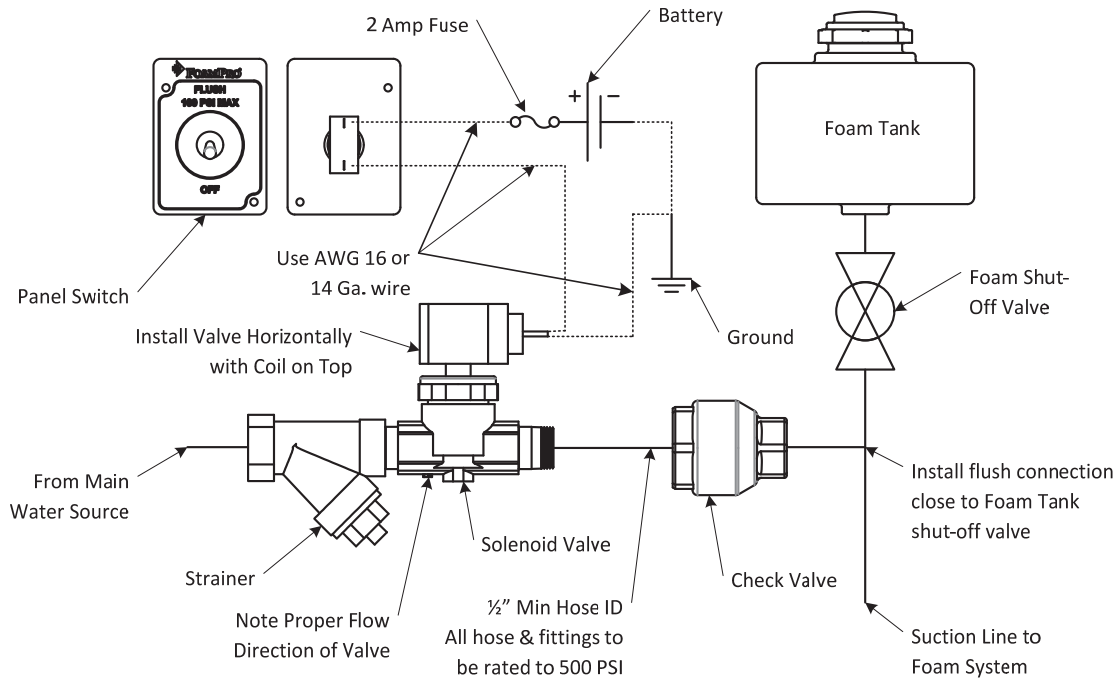
Installation:

- Warning: Make sure electrical power is disconnected from the battery and the Foam Tank Shut-Off valve is closed before starting installation.
- Use AWG 16 or 14 automotive wire for electrical hookup.
- Use only brass or stainless steel fittings.
- Use hoses rated for 500 psi and compatible with fluids being used.
- When flushing system do not exceed 100 psi water pressure.

- Cut panel to dimensions shown and install placard and switch.



- Install per the following schematic



Operation:

- Close Foam Tank Shut-Off valve.
- Open discharge line or cal/inject valve.
- With water pump running, turn flush switch to on position and run foam system until output is clear.
- Turn off foam system, return Flush switch to OFF position, and close discharge or cal/inject valve.
- Keep Foam Tank Shut-Off valve closed until foam is required.

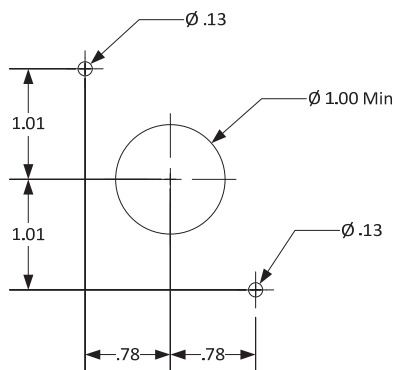
3430-0835 Installation Instructions

Form 949-Rev150506

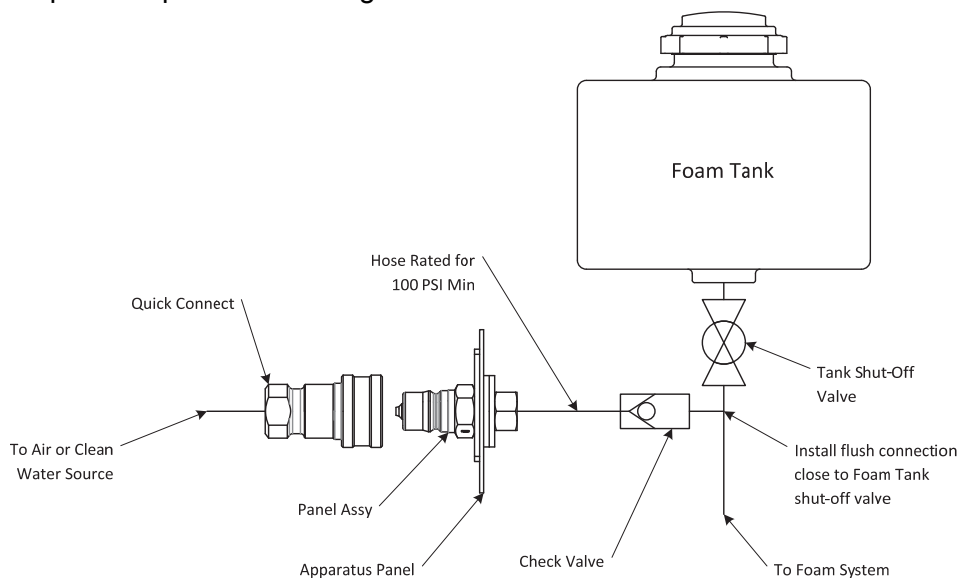
The External Single Flush kit is to be installed on the apparatus with a handy panel hook-up for use with an external water or air source for flushing and winterization.

Installation:

- Warning: Make sure electrical power is disconnected from the battery, and the Foam Tank Shut-Off valve is closed before starting installation.
 - Use only brass or stainless steel fittings.
 - Use hoses rated for 100 psi or greater and compatible with fluids being used.
 - When flushing system, do not exceed 100 psi air or water pressure.
- Cut panel to dimensions and install placard and fittings as shown.



- Install components per the following schematic.



Operation:

- Close Foam Tank Shut-Off valve.
- Open discharge line or cal/inject valve.
- Connect water or air supply to panel fitting, turn on water or air supply, and run foam system until output is clear.
- Turn off foam system, turn off water or air supply, close discharge or cal/inj valve, and disconnect supply at panel.
- Keep Foam Tank Shut-Off valve closed until foam is required.