

## LIGHTING PRODUCTS



**FIRE RESEARCH CORPORATION**  
26 Southern Blvd., Nesconset, NY 11767  
TEL 631.724.8888 FAX 631.360.9727  
**TOLL FREE 1.800.645.0074**  
www.fireresearch.com



# NO-SCRATCH for MODEL 530 TELESCOPIC POLE

## INSTALLATION INSTRUCTIONS

Refer to the General Lighting manual or lamphead specific sheets for safety and maintenance.

### Install No-Scratch Guide Collar and Guide Rail

1. Install the telescopic pole according to instructions for side mount telescopic pole.

**Note:** It is recommended that the Steady Rest Bracket be installed with the No-Scratch option.

2. Use the guide rail as a template and mark the mounting holes.

**Note:** The slot in the guide collar has to engage the guide rail when the pole is in the down position. The collar mounts on the handle of the pole, ensure the guide rail will be in the correct position before drilling mounting holes.

3. Drill holes and secure the guide rail.
4. Place the guide collar in position on the pole handle. Before tightening the two screws ensure that when the slot engages the rail the lamphead is in the correct position.
5. Tighten the screws.

### Install No-Scratch Rubber Bumpers (Focus Lamphead Only)

1. Place the rubber bumper in position on the bottom of the end cooling fin.
2. Using the bumper as a guide, drill a hole through the cooling fin with a number 30 bit.
3. Place the backing plate on the rivet and insert the rivet thru the bumper and mounting hole.
4. Secure the bumper with the rivet.



No-Scratch Rubber Bumpers  
for Focus Lampheads

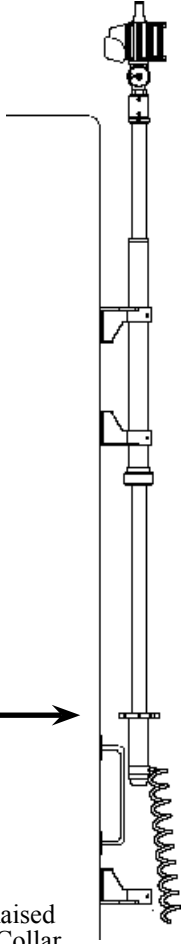
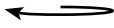


No-Scratch Guide Rail  
and Guide Collar for  
530 Telescopic Poles

Shown with a Steady  
Rest Bracket Installed

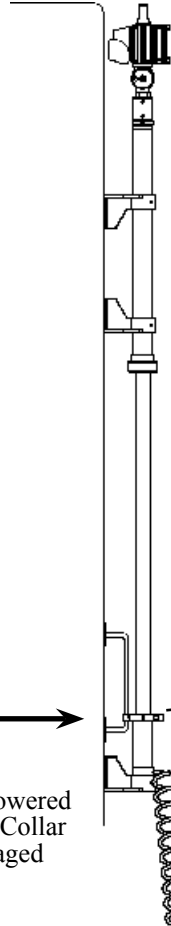
## Install No-Scratch for 530 Telescopic Pole

As the Pole is Raised the guide collar disengages from the guide rail and the lamphead is free to rotate 360°.

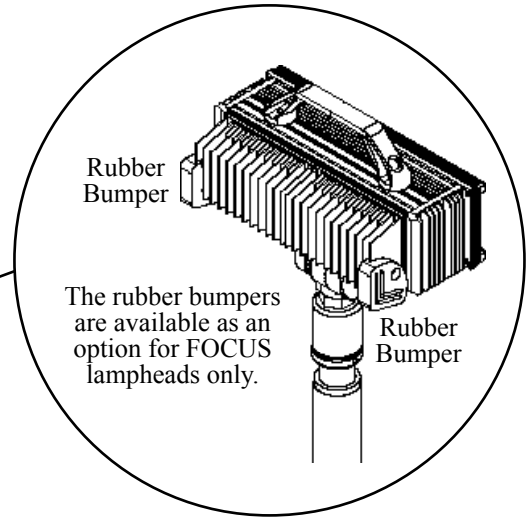


Pole Raised  
Guide Collar  
Disengaged

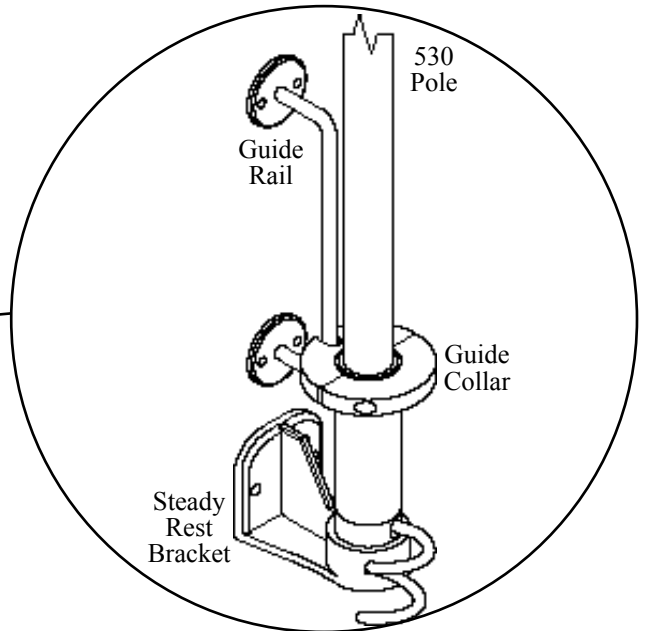
As the Pole is Lowered the guide collar engages the guide rail and prevents the pole from being lowered unless the lamphead is correctly aligned.



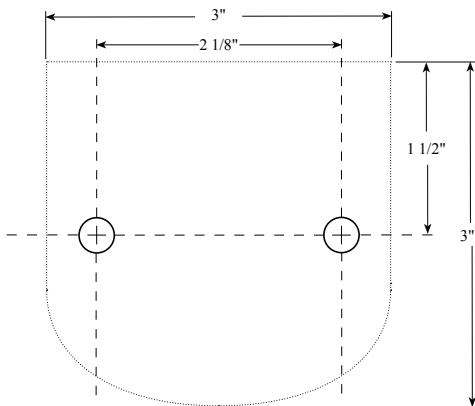
Pole Lowered  
Guide Collar  
Engaged



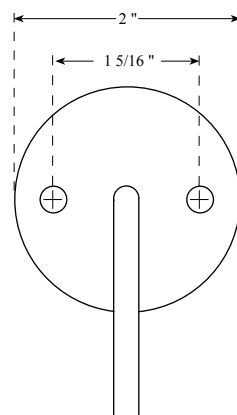
The rubber bumpers help prevent scratching and denting by eliminating any metal-to-metal contact between the rear of the lamphead and the apparatus body surfaces when the pole is lowered.



**Note:** When positioning a telescopic pole ensure that the lamphead will clear all obstructions and the twist lock will be accessible.



**Side Mount Bracket Footprint**  
The footprint is the same for all side mount and steady rest brackets.



**Guide Rail Footprint**

The rail is approximately 8 1/4 inches long.