

LIGHTING PRODUCTS



FIRE RESEARCH CORPORATION
26 Southern Blvd., Nesconset, NY 11767
TEL 631.724.8888 FAX 631.360.9727
TOLL FREE 1.800.645.0074
www.fireresearch.com



RAISED POLE WARNING SWITCH AND INDICATOR

OVERVIEW

The raised pole warning switch is a normally closed magnetic switch mounted on the outer pole. A magnet, mounted on the inside of the inner pole, keeps the switch contact open when the pole is in the down position (see Diagram 1).

When the light is raised the magnet moves with the inner pole away from the switch and the contact closes (see Diagram 2).

This completes the electrical circuit to turn on the raised pole warning indicator (see Wiring).

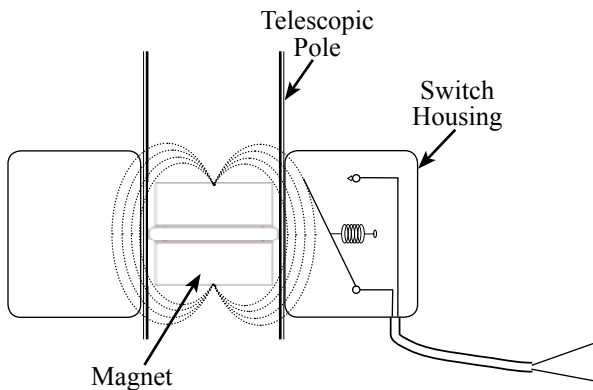


Diagram 1. Pole Down; Magnet Holds Switch Open

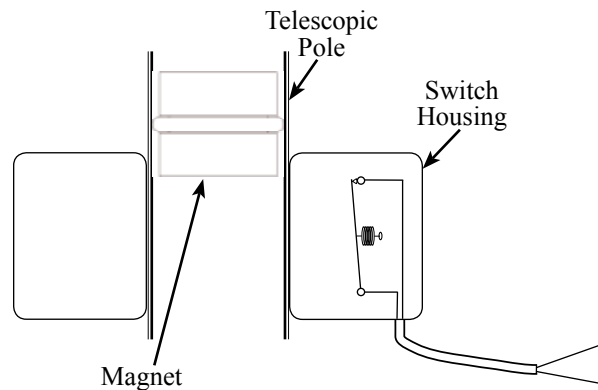
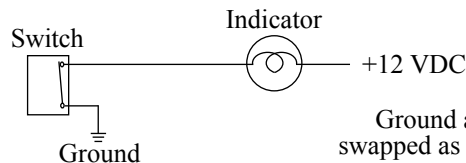


Diagram 2. Pole Moves Up with Magnet; Switch Closes

Wiring

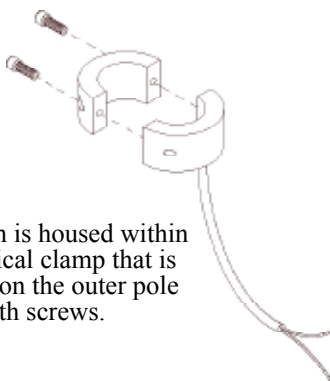
The switch is shown with pole in the up position.



Ground and +12 VDC can be swapped as required for installation.

Three Types of Switch Housings

Side Mount Pull-Up Poles and Thru-The-Roof Push-Up Poles



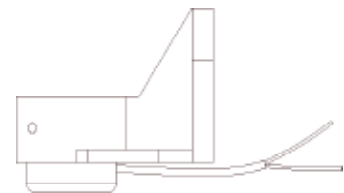
The switch is housed within a cylindrical clamp that is mounted on the outer pole with screws.

Top Mount Pull-Up Poles



The switch is housed within the mounting flange.

Side Mount Push-Up Poles



The switch is housed within a PVC holder that is mounted in the bottom steady rest bracket.

DESCRIPTION

Specifications

Switch		Indicator	
Contact	Single Pole Single Throw (SPST)	Type	1891
Position	Normally Closed (NC)	Voltage	+ 14 VDC
Current	0.25 AMPS	Current	0.25 AMPS
Power	3 WATTS		

CAUTION: If the switch is to be used with a higher current application a relay must be provided to avoid switch failure.

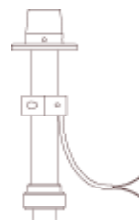
Switch Housing Locations

If the switch housing is removed during installation, care should be taken to remount the switch in the correct position. Raise and lower the pole and ensure that the switch opens and closes correctly.

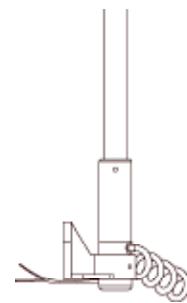
Models 510
Top Mount
Pull-Up Poles



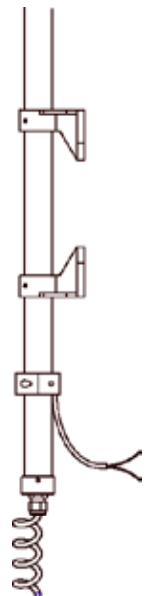
Models 512
Thru-The-Roof
Push-Up Poles



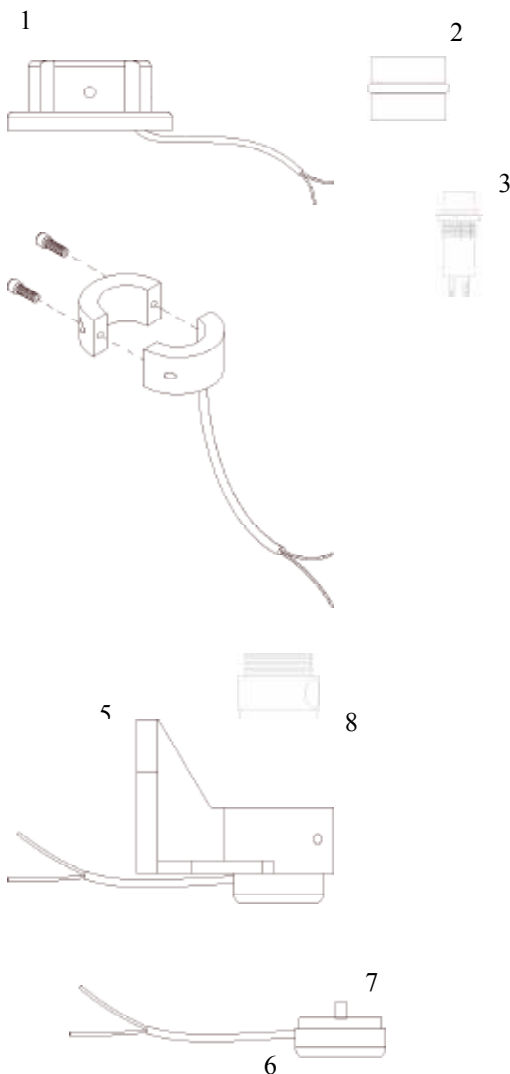
Models 530
Side Mount
Push-Up Poles



Models 540, 542
Side Mount
Pull-Up Poles



PARTS LIST



Index	Part Number	Description
	LT-S100	Kit, Raised Pole Warning, 510 Poles
1	. LT-S347SW	. Switch Assembly, Top Flange, Magnetic, NC
	. LT-S347C-SW	. Switch Assembly, Top Flange C/E, Magnetic, NC
2	. LT-S337	. Magnet, Inner Pole
3	. LT-SZL606	. Indicator Assembly
	LT-S101	Kit, Raised Pole Warning, 512, 540, 542 Poles
4	. LT-S336SW	. Switch Assembly, Donut, Magnetic, NC
2	. LT-S337	. Magnet, Inner Pole
3	. LT-SZL606	. Indicator Assembly
	LT-S102	Kit, Raised Pole Warning, 530 Poles
	-LT-S102-B	Kit, Raised Pole Warning, 530 Poles, 5" Bracket
	-LT-S102-C	Kit, Raised Pole Warning, 530 Poles, 7" Bracket
5	. LT-S304SW	. Switch Assembly, Steady Rest,
-5	. LT-S305SW	. Switch Assembly, Steady Rest 5"
-5	. LT-S306SW	. Switch Assembly, Steady Rest 7"
6	. . LT350C	. . Switch Holder, PVC
7	. . LT-808-2000	. . Switch, Magnetic, NC
8	. LT-S318C	. Magnet, Pole End w/Strain Relief
3	. LT-SZL606	. Indicator Assembly